



Anacostia Waterfront Forum

Martin Luther King, Jr. Library

February 17, 2009





***Sustainable Development,
Infrastructure, and the Future of the
District of Columbia***

***Kathleen Linehan Penney
Chief Engineer,
District Department of Transportation***

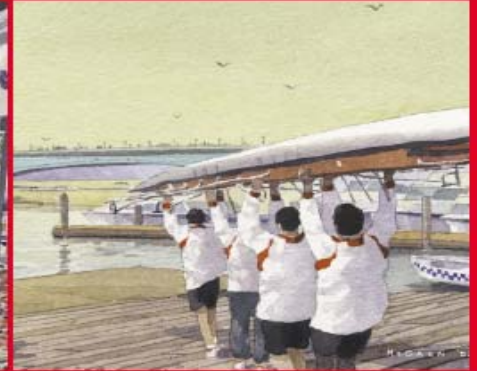
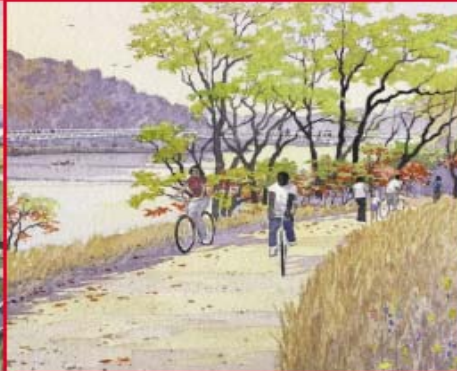


Legend

- Water
- Woodland
- Recreation Areas
- Meadow
- Wetland
- School Grounds
- Plaza
- Significant Existing Buildings
- Existing Site Buildings
- Proposed Buildings
- Potential Development
- Trail
- Park Road
- Parking Lot
- Streetscape
- Building
- Marina /Dock
- Potential Monument Site
- Railroad
- Canoe Tie



Framework Plan



The Anacostia Waterfront Framework Plan

District of Columbia, Office of Planning November 2003



Completed in Coordination with the Anacostia Waterfront Initiative Partner Agencies

Government of the District of Columbia, General Services Administration, United States Department of the Interior, Naval District Washington, District of Columbia Housing Authority, District of Columbia Sports and Entertainment Commission, District of Columbia Water and Sewer Authority, Marine Barracks of Washington, National Capital Planning Commission, National Capital Revitalization Corporation, United States Army Military District of Washington, United States Army Corps of Engineers, United States Department of Labor, United States Department of Transportation, United States Department of Housing and Urban Development, United States Environmental Protection Agency, United States Office of Management and Budget, United States Department of Agriculture, United States Small Business Administration, Washington Metropolitan Area Transit Authority



www.theanacostiawaterfront.com

4



The Anacostia Waterfront Vision



“The Anacostia River Corridor will unite the city economically, physically, and socially as the center of 21st century Washington and a cornerstone of the National Capital Region.

The destiny of the city as the nation’s capital and a premiere world city is inextricably linked to re-centering its growth on the Anacostia waterfront and making its long-neglected parks, environment, and infrastructure a national priority.

The waterfront will bridge every aspect of Washington’s urban life in the next century and be the hallmark of a new civic identity.”



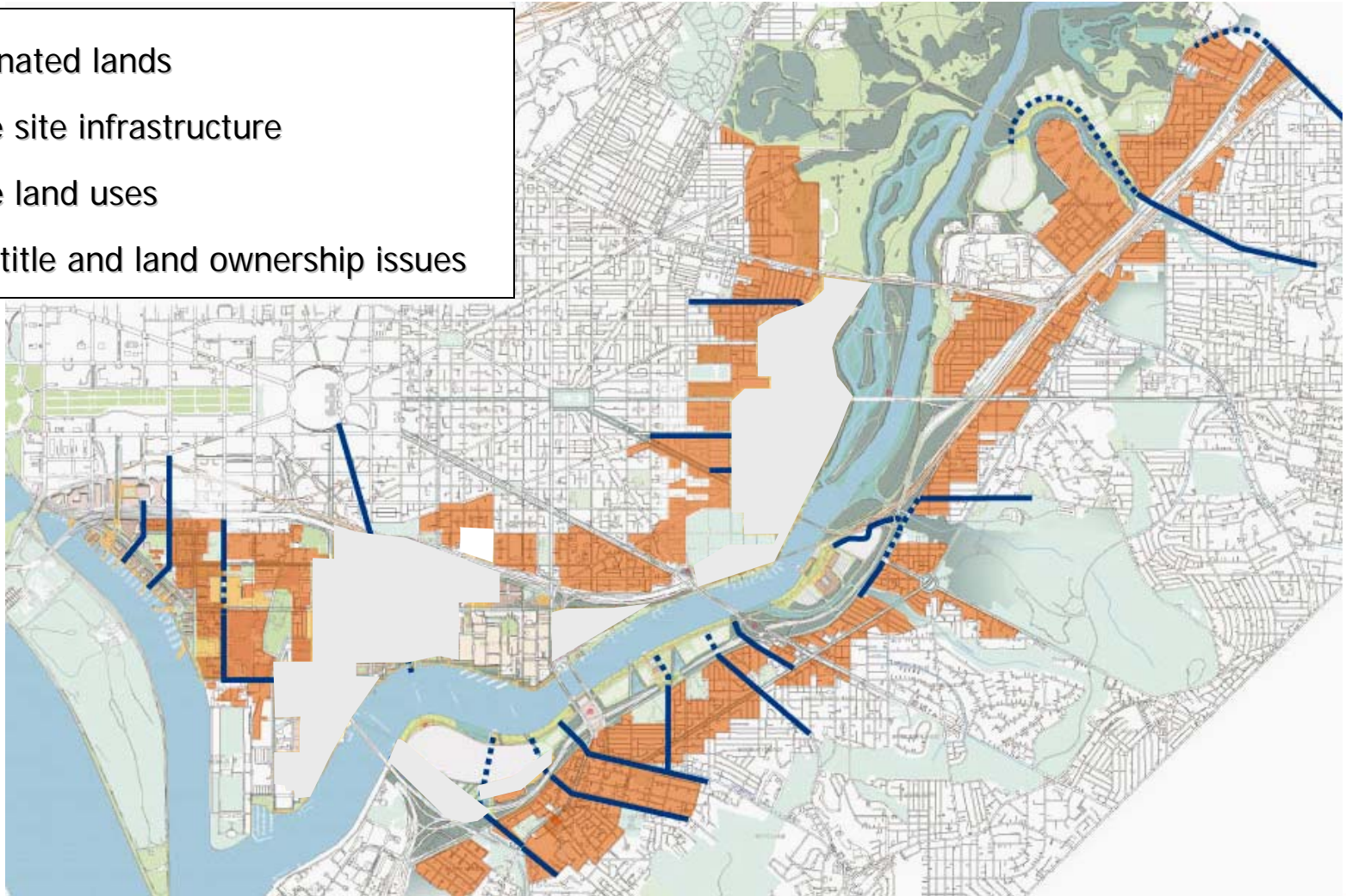
"...a fundamental redefinition...of federal, city and regional relationships..."



“...neighborhoods that don't touch the Anacostia Waterfront.”



- Contaminated lands
- Obsolete site infrastructure
- Obsolete land uses
- Multiple title and land ownership issues



“...severe limitations of our current infrastructure”



Photo by D.C. Dept. of Transportation



***“...the Anacostia River shoreline:
hard to find, difficult to reach, and
impractical to traverse”***



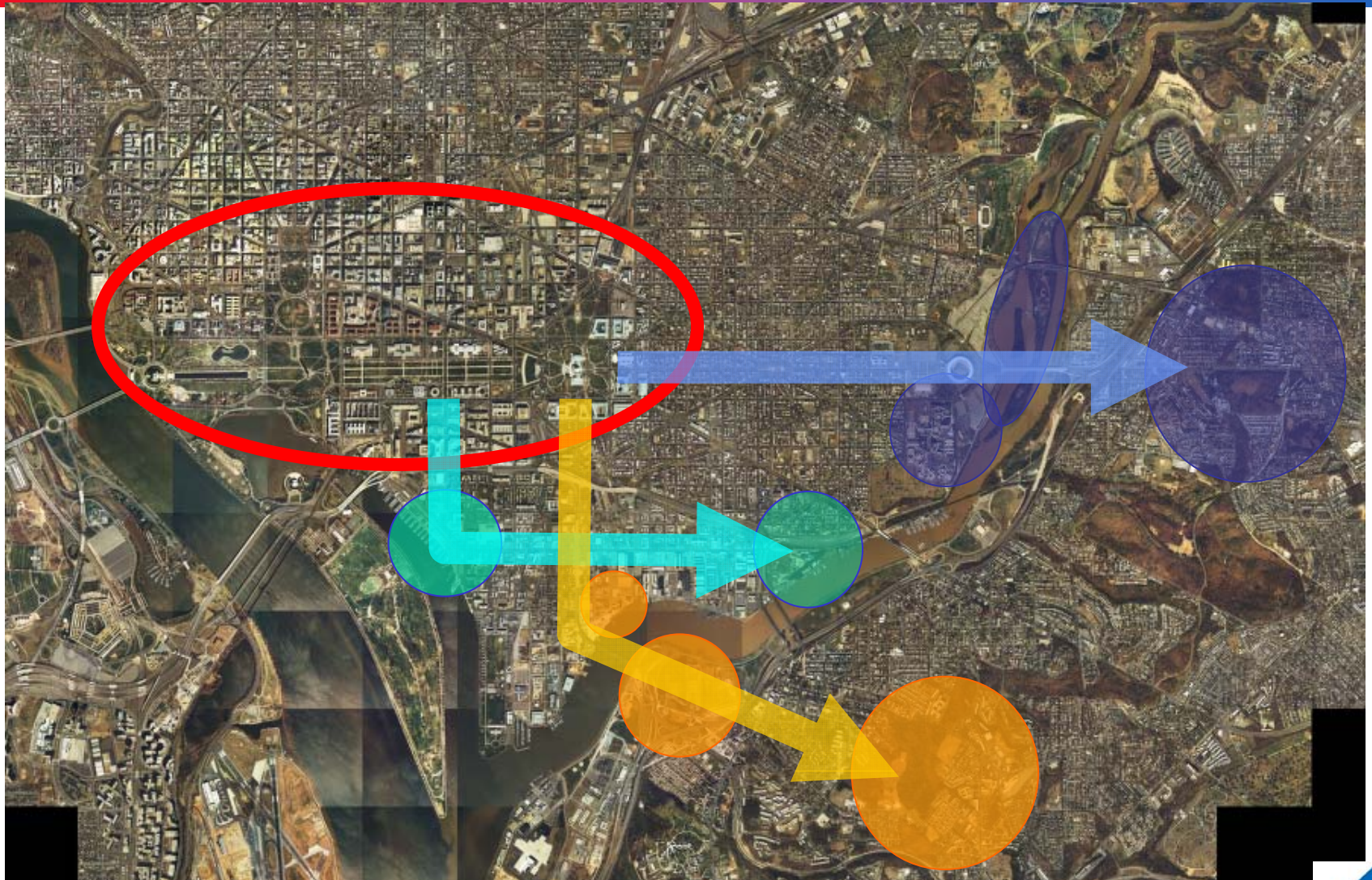
Photo by Michael Bonfigli



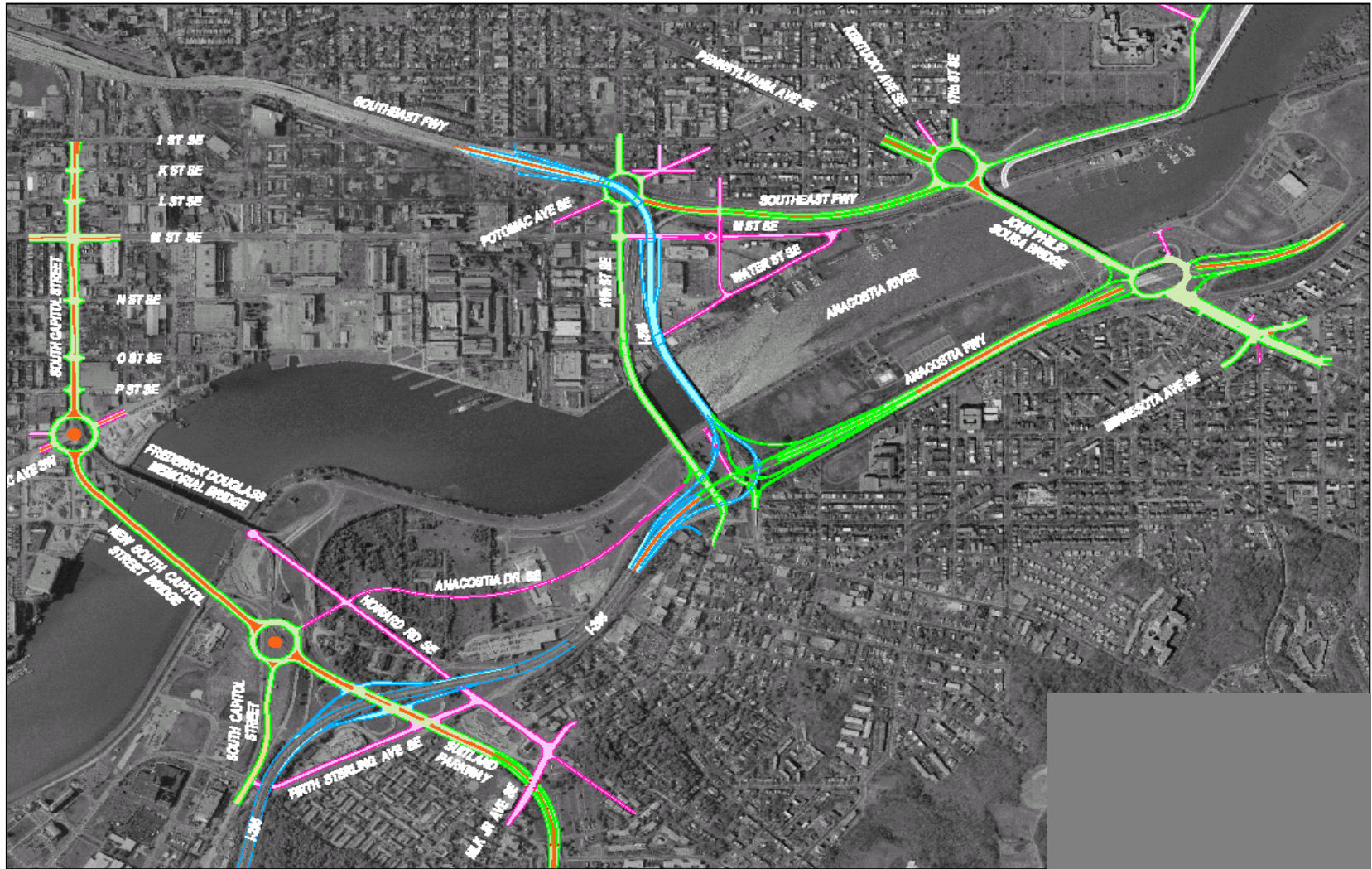
“...infrastructure that has outlived its useful life.”



DC's Southeastern Growth Orientation



The New Anacostia Waterfront Transportation System



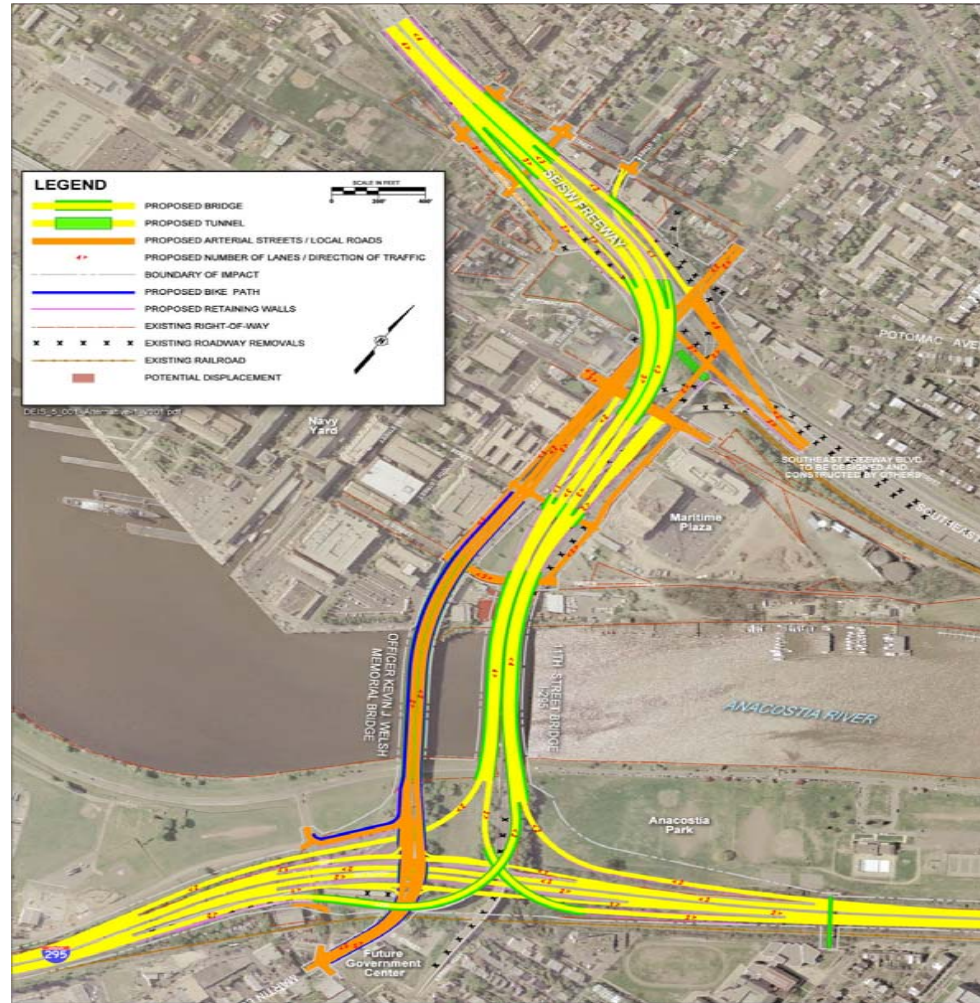
South Capitol Street Corridor: BEFORE Bridge Lowering and Rehabilitation



South Capitol Street Corridor: with Future Development



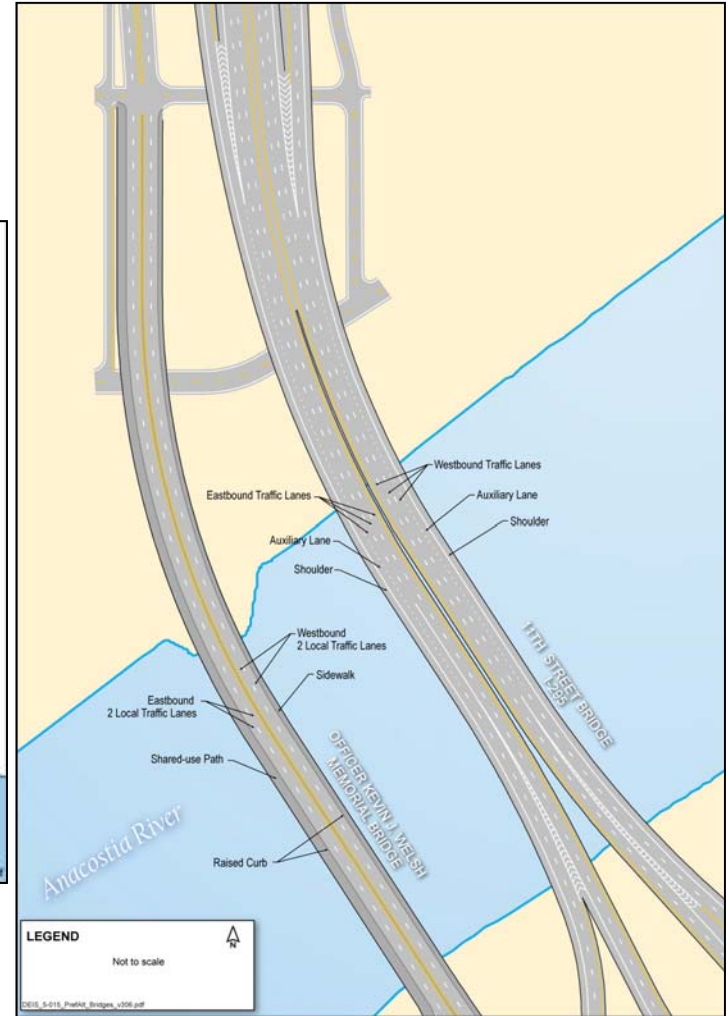
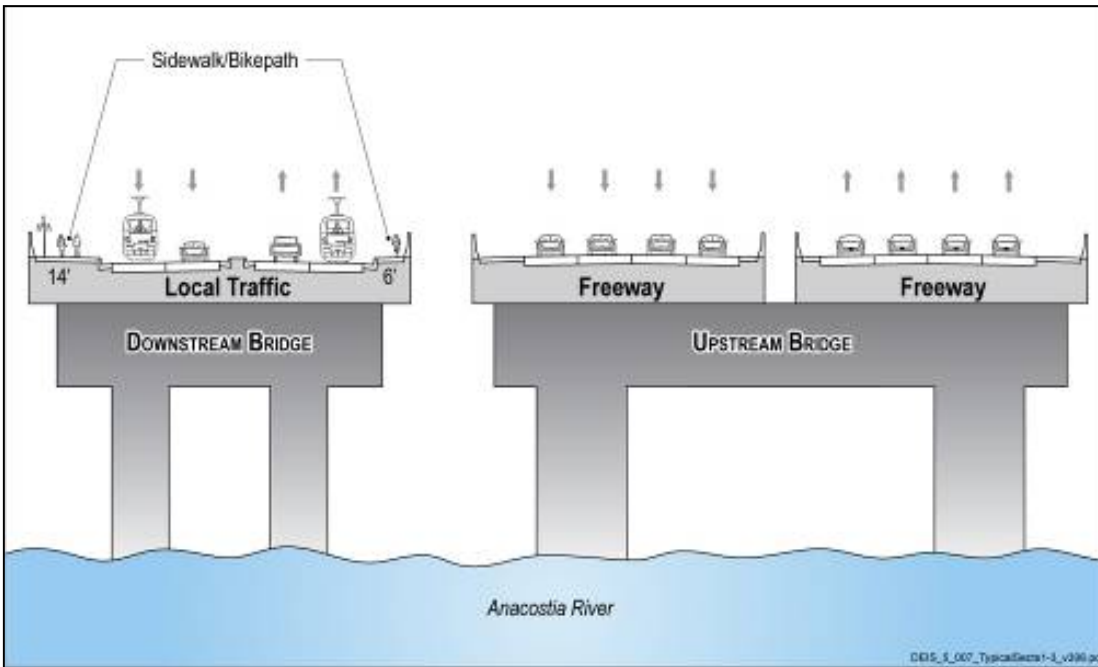
11th Street Bridges Replacement



11th Street Bridges Replacement Configuration



Preferred Alternative Typical Section – Looking West



Benefits of Sustainable Development



- *Twenty miles of a continuous Anacostia Riverwalk and Trail along both banks of the Anacostia waterfront*
- *A revitalized South Capitol Street Corridor in the form of a grand, urban boulevard, creating a monumental gateway to the nation's capital.*



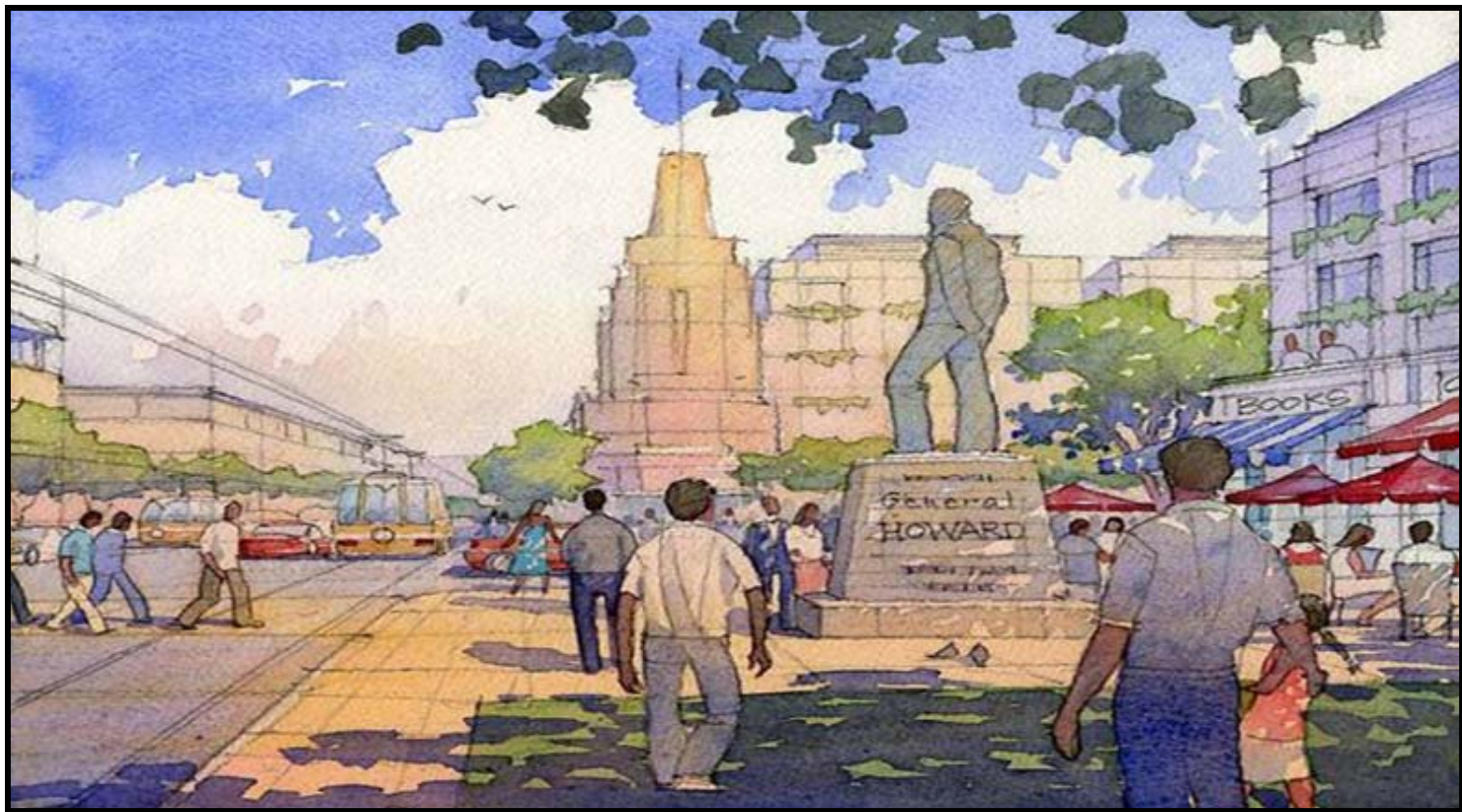
Artist rendering: Frederick Douglass Bridge and Anacostia Riverwalk



Benefits of Sustainable Development



- *Prominent sites for 10 additional museums and/or cultural destinations, and for more than a dozen future memorials and monuments.*



Artist rendering: Neighborhood monument, Barry Farm "new community"



Benefits of Sustainable Development



➤ Additional tax revenues for the District estimated at \$1.5 billion over 20 years



Artist rendering: Martin Luther King Jr. Avenue, "Great Streets"



Benefits of Sustainable Development



- *New mixed-use neighborhoods at the Southwest Waterfront, the Near Southeast Waterfront, and the Hill East Waterfront*



Artist rendering: Southwest Waterfront



Benefits of Sustainable Development



- 9100 additional housing units / 1830 units completed / 400 units under development
- 18,000 additional District residents
- 16M sq. ft. of office space / 6.2M sq. ft. developed
- 1M sq. ft. of commercial space / 120,000 sq. ft. developed



Computer-generated rendering: The Yards



Benefits of Sustainable Development



➤ *Over 20 million square feet of commercial, retail, and service-oriented space*

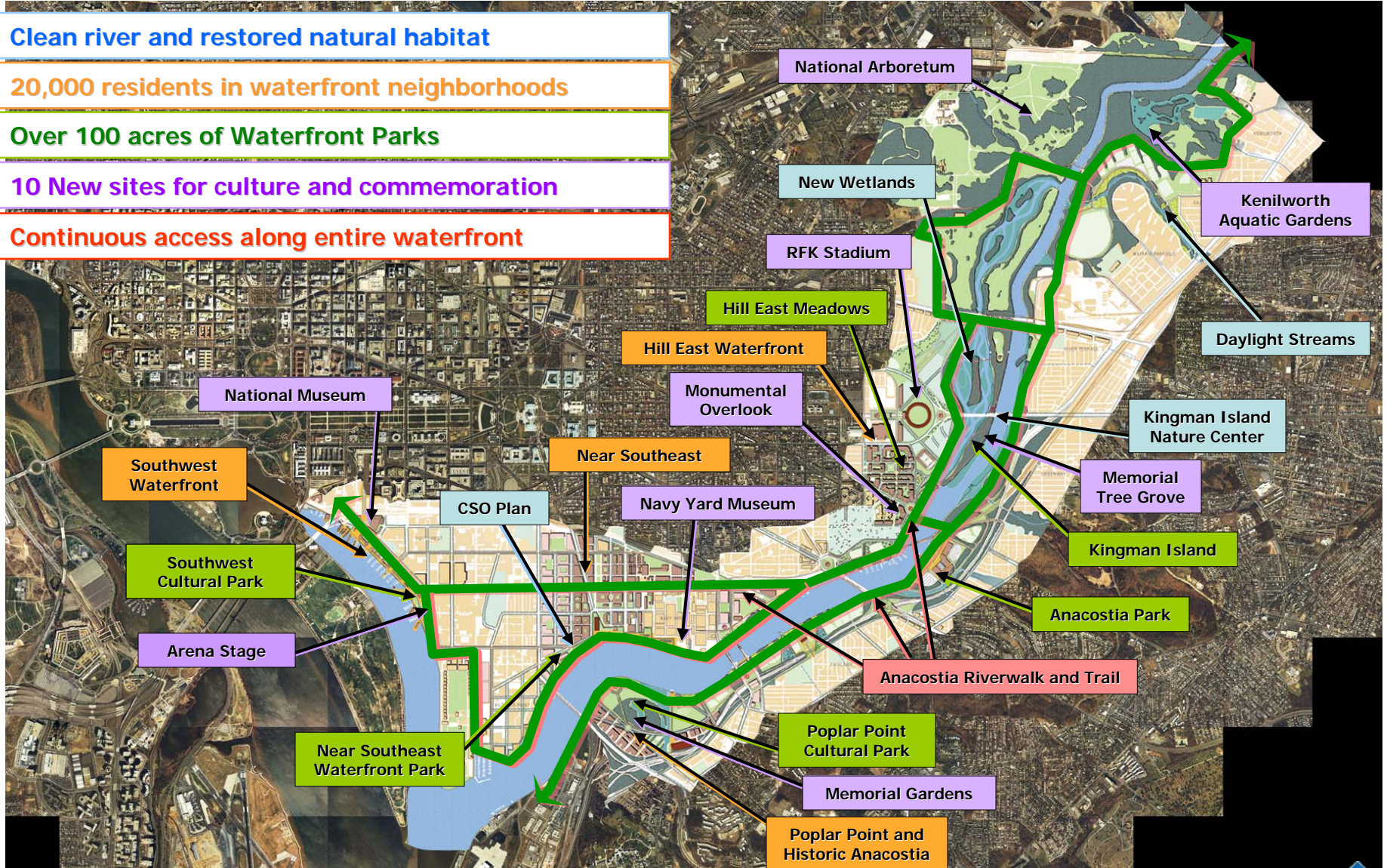


Artist rendering: Boulevard, Massachusetts Avenue, Hill East



The Anacostia Waterfront: On the Map!

- Clean river and restored natural habitat
- 20,000 residents in waterfront neighborhoods
- Over 100 acres of Waterfront Parks
- 10 New sites for culture and commemoration
- Continuous access along entire waterfront





*Environmental, economic,
and social well-being for
today and tomorrow.*





Anacostia Waterfront Civic Engagement Program

***300 M Street SE
Suite 800
Washington, DC 20003***

Desk: 202-715-6641

Fax: 202-715-6601

