



Parkside Pedestrian Bridge

Stakeholder Outreach - March 5, 2009



Parkside Pedestrian Bridge



- Project Background
- Recent Progress
- Design and Construction Schedule



Parkside Pedestrian Bridge

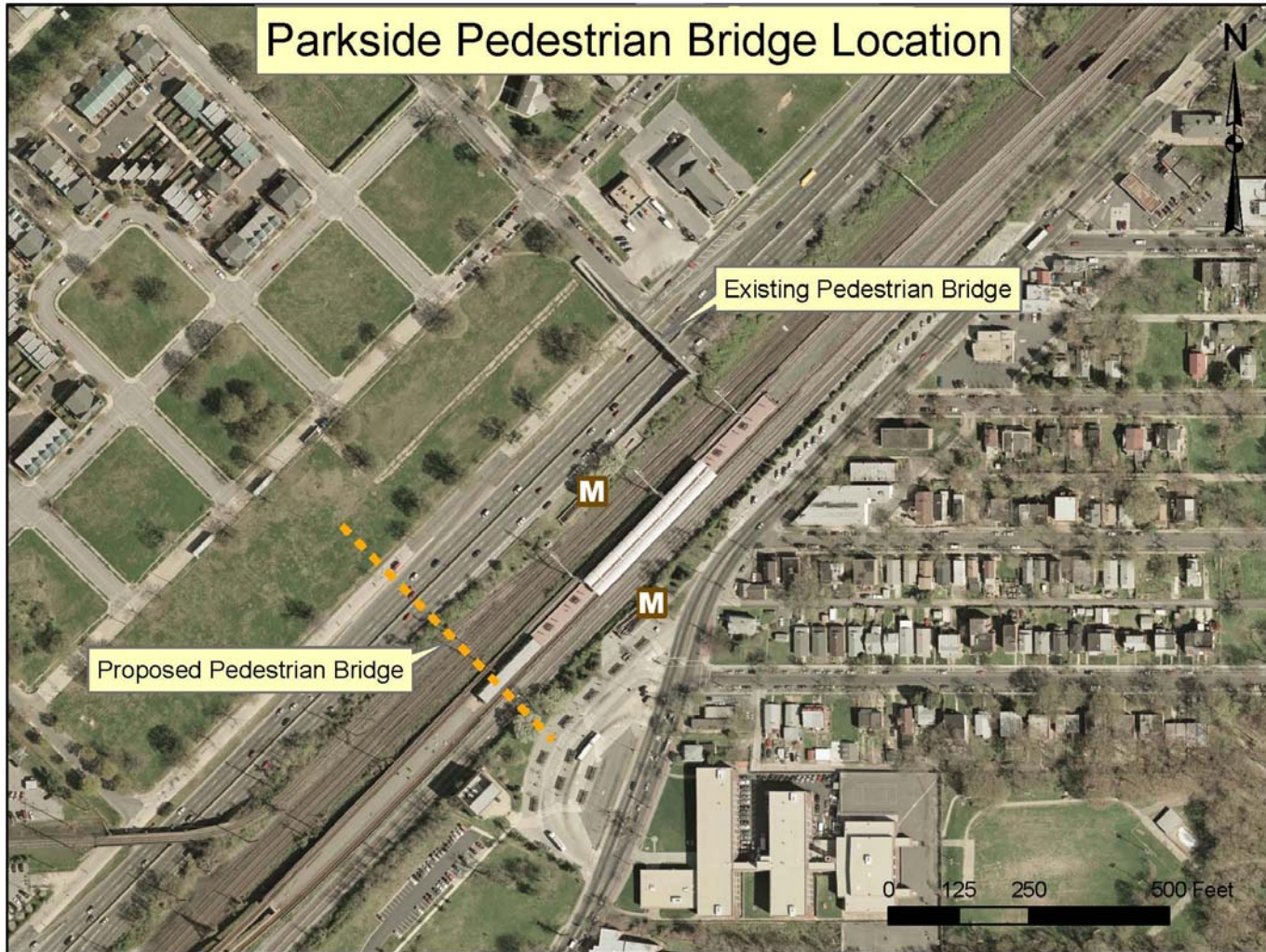
PROJECT BACKGROUND



- 2005 – Parkside Neighborhood design developed leading to concept of new pedestrian bridge.



Parkside Pedestrian Bridge **PROJECT BACKGROUND**



Parkside Pedestrian Bridge PROJECT BACKGROUND



- 2005 – Parkside Neighborhood design developed leading to concept of new pedestrian bridge.
- Parkside selected as a target neighborhood under the AWI for revitalization and important gateway to Anacostia River.
- The execution of the Pedestrian Bridge Project conceived as a collaborative effort with the District Government and Parkside Developer.
- March 2007 - The Anacostia Waterfront Corporation (AWC) selected conceptual design competition winner.



Parkside Pedestrian Bridge **PROJECT BACKGROUND**



AWC Conceptual Design Competition Winner



www.theanacostiawaterfront.com



Parkside Pedestrian Bridge

RECENT PROGRESS



- September 2007 – AWC dissolved and project transitioned to Deputy Mayor's Office for Planning and Economic Development.
- January 2008 to October 2008 – DDOT completes preliminary engineering study including re-evaluation of design concepts



Parkside Pedestrian Bridge

RECENT PROGRESS



- Evaluation of Eleven Pedestrian Bridge Alternatives
 - Aesthetics
 - Functionality
 - Design/constructability issues
 - Preliminary development cost

- Drill-down of Four Design Alternatives
 - Preliminary structural analysis
 - Geotechnical considerations
 - Conflicts with utilities
 - Rail constraints
 - Timeline for construction
 - Refined cost estimates
 - Aesthetic improvements



Parkside Pedestrian Bridge **CONSTRUCTION CONSIDERATIONS**



Utility Clearance at Minnesota Ave



Parkside Pedestrian Bridge

RECENT PROGRESS



- Narrowed alternatives to 4 options that met project goals:
 - Low-rise suspension bridge
 - Cable-Stayed Bridge
 - Three Span Tied Arch
 - Three Span Girder Bridge

- Low-rise Suspension and Girder Bridges found to be most advantageous due to cost and constructibility

- Aesthetically, Low-Rise Suspension Bridge found to be superior to Girder Bridge



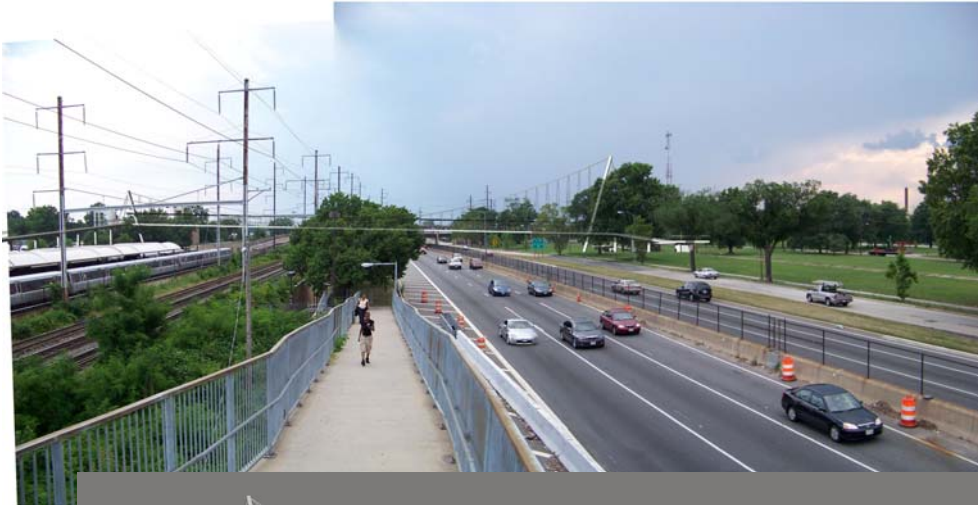
Parkside Pedestrian Bridge



Girder Bridge Architectural Concept



Parkside Pedestrian Bridge



Low Rise Suspension Bridge - Preferred Architectural Type



www.theanacostiawaterfront.com



Parkside Pedestrian Bridge

DESIGN AND CONSTRUCTION SCHEDULE



- Summer 2009 - Begin Full Design Effort
- Winter 2010 - Complete Design
- Summer 2010 – Begin Construction (Pending Utility and Development Coordination Requirements)





QUESTIONS?

■ **For more information, contact:**

**Joseph Dorsey, 202-671-4608
joseph.dorsey@dc.gov**

~ or ~

**Jeffrey Seltzer, 202-671-4607
jeffrey.seltzer@dc.gov**

