



Pennsylvania Avenue / Potomac Avenue Intersection Environmental Assessment Update

ANC 6B- June 9, 2009



Penn/Potomac Ave EA



- Project Team & Background
- Recent Progress
- Design and Construction Schedule



Project Team Members



- **Joe Dorsey**, DDOT (Project Manager)
- **Caroline Ellis**, HNTB (Environmental Planner)
- **Robin Sterry**, HNTB (Environmental Manager)
- **Jon Whitney**, HNTB (Project Manager)
- **Todd Stephens**, HNTB/JSA (Public Outreach)



Penn/Potomac Ave EA LOCATION MAP



Pennsylvania Avenue / Potomac Avenue Intersection Improvements

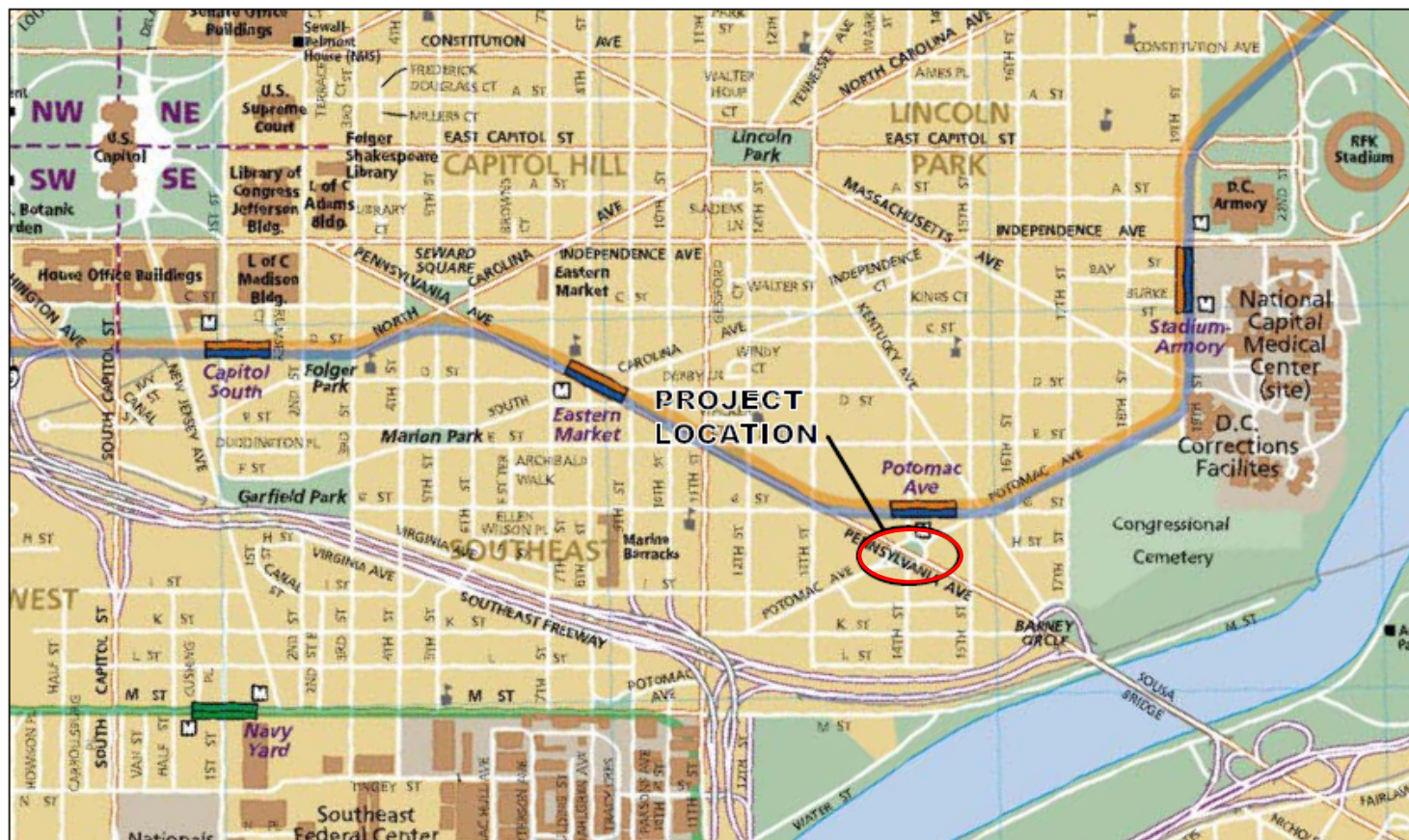


Figure 1

Project Location Map

Environmental Assessment

Prepared by: HNTB Corporation, 2009



Penn/Potomac Ave EA PROJECT BACKGROUND



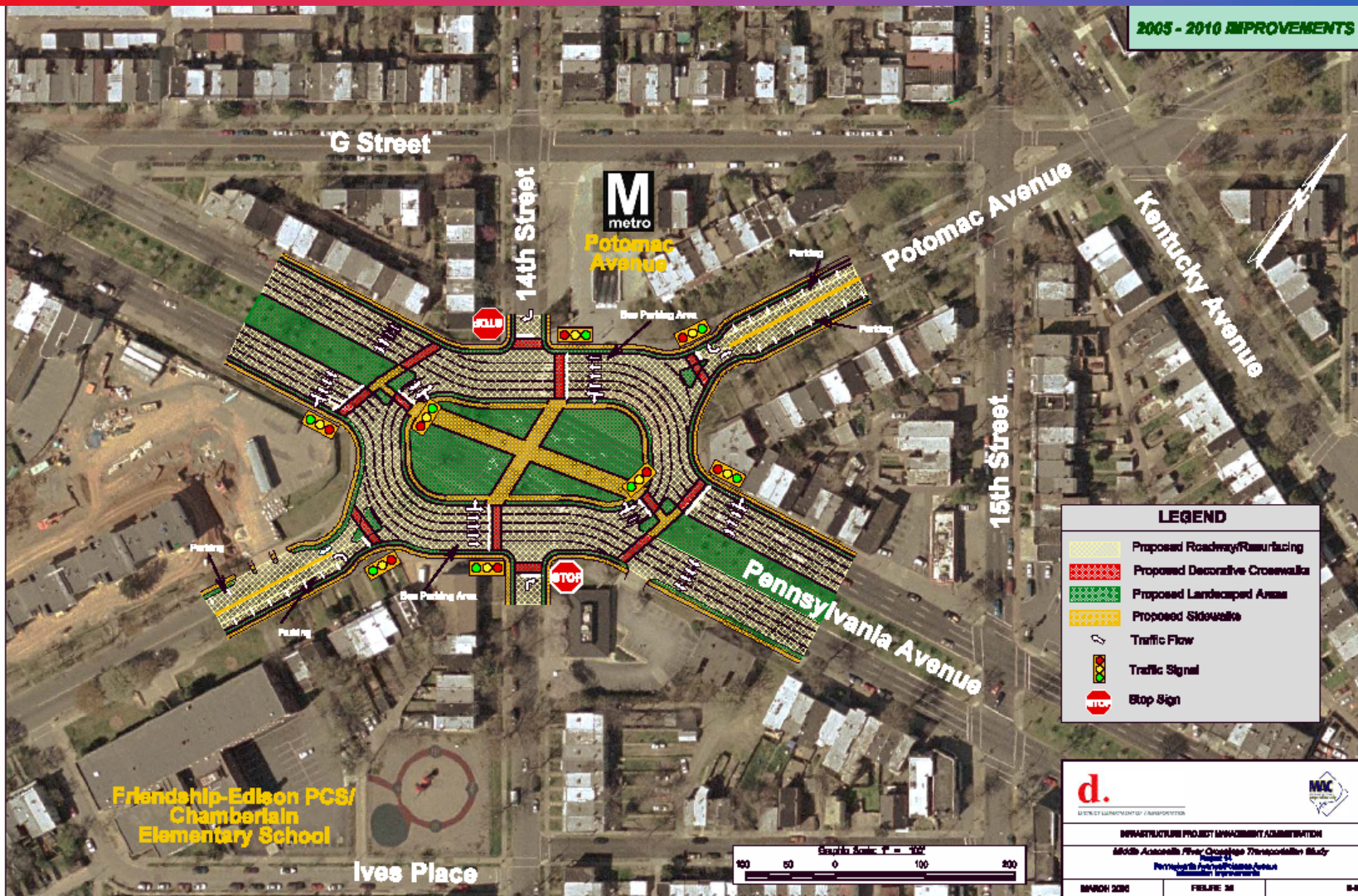
- 2005 –**Middle Anacostia River Crossings** (*MAC Study*) completed; Study recommended improvements to the intersection of Pennsylvania & Potomac Avenues as a Mid-Term Improvement (2005-2010);
- Active site due to heavy traffic volumes, transit and pedestrian activity associated with the Potomac Avenue Metro Station and numerous bus stops within focal area
- Additional pedestrian and vehicular demands introduced with the redevelopment of the NW corner of the intersection (Jenkins Row)
- MAC Study Construction Cost Estimate in 2005 was \$2.6 million



Penn/Potomac Ave EA MAC STUDY PLAN



2005 - 2010 IMPROVEMENTS



Friendship-Edison PCS/
Chamberlain
Elementary School

Ives Place



Why Complete an Environmental Assessment (EA)?



■ Proposed Action

- Land exchange between DDOT and NPS.
- Federal funding will be used to design and construct the improvements.

■ National Environmental Policy Act (NEPA)

- All Federal agencies must examine the environmental consequences of Federal actions and conduct a decision making process that incorporates public input.
- Three levels of NEPA Review:
 - Categorical Exclusion
 - **Environmental Assessment**
 - Environmental Impact Statement



Penn/Potomac Ave EA

CONTENTS OF THE EA



- Proposed Action
- Purpose and Need
- Alternatives
 - Action (Build / Preferred Alternative)
 - No Action (No Build)
 - - Required by NEPA
- Affected Environment
- Environmental Consequences



Penn/Potomac Ave EA

PURPOSE AND NEED



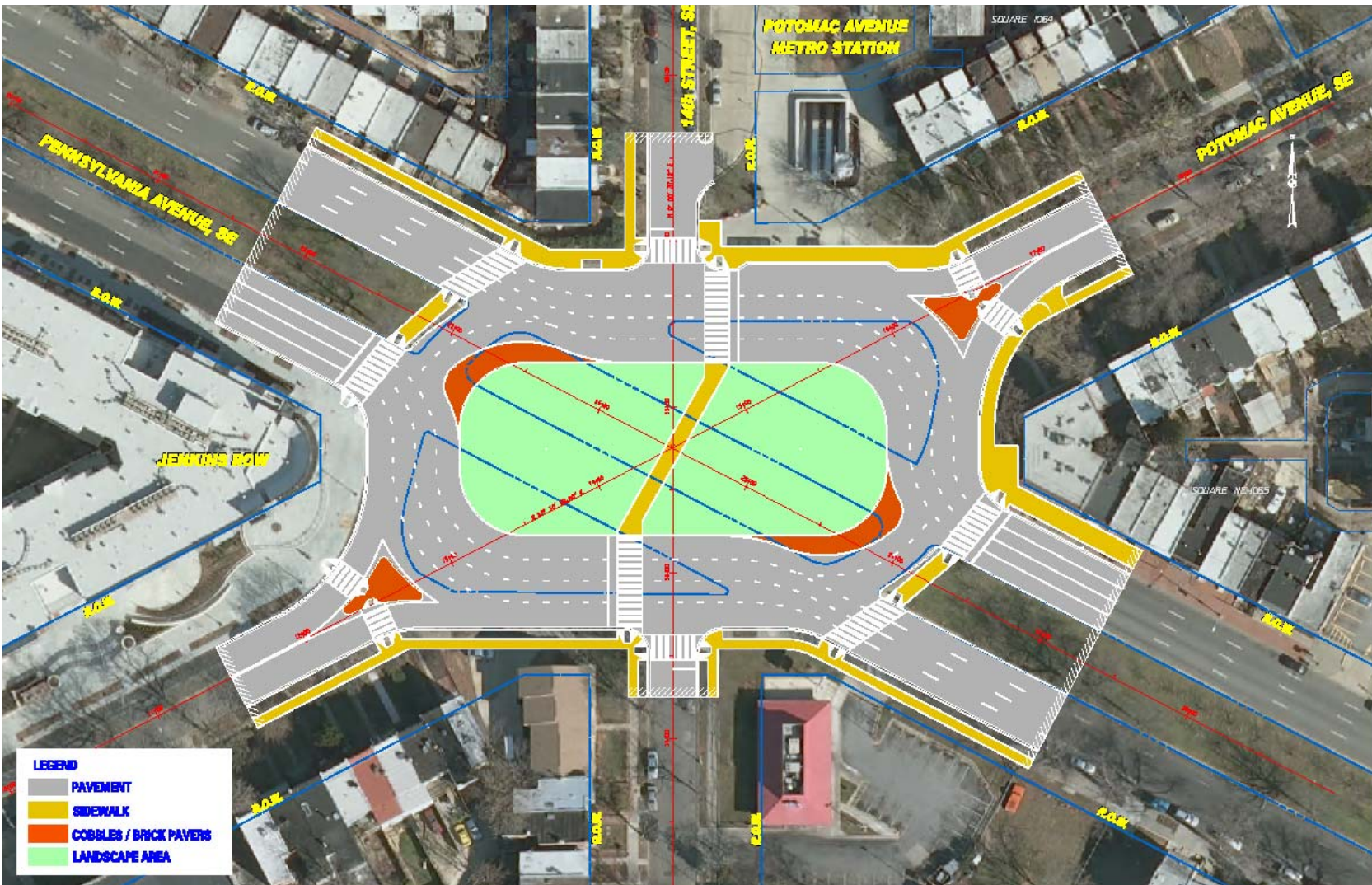
- To exchange National Park Service and District of Columbia (DDOT) property in order to allow for the proposed improvements to the Pennsylvania and Potomac Avenues intersection to improve:
 - Safety
 - Mobility
 - Accessibility & Connectivity
 - Aesthetics & Economic Opportunity



Penn/Potomac Ave EA EXISTING CONDITIONS / NO-BUILD



Penn/Potomac Ave EA PREFERRED ALTERNATIVE



Penn/Potomac Ave EA PROJECT SCHEDULE



- 2/09: Environmental Assessment began
- 8/09: Issue Draft EA for public review & comment (one-month duration)
- 10/09: Incorporate Comments & Responses into EA
- 12/09: Issue Final EA
- *3/10: Solicitation for Design (9 months)
- *1/11: Solicitation for Construction (12 months)

* *Pending Budget Authorization/Availability*





QUESTIONS?

For more information, contact:

Joseph Dorsey, 202-671-4608

joseph.dorsey@dc.gov

~ or ~

Jon Whitney, 202-715-6610

jwhitney@HNTB.com

